



Solution Spotlight

Critical Power Consultants Solutions for Power Systems

Critical Power Consultants helps customers implement a redundant control and monitoring solution

“We prefer to use GE Intelligent Platforms and other GE solutions because over the broad spectrum of devices, the GE Family coordinates a package of power products and controls along with its software that meets our needs and the needs of our customers. Superior technical support has always been one of our requirements in vendor selection, and GE has never failed to perform in both site support and product selection assistance.”

Gary Butcher, *President*,
Critical Power Consultants

Critical Power Consultants (CPC) specializes in emergency standby power control systems, load management control systems, and monitoring solutions. With locations in Roanoke, VA and Algonquin, IL, CPC offers a host of technical services to other original equipment manufacturers (OEMs), engineering firms, and end users that require quick, responsive engineering services of critical power systems.

CPC’s target market includes data centers, hospitals and municipalities that need to upgrade aging emergency power systems or need to expand existing systems to facilitate growth. Today, customers face increasing critical power demand within the same space, which requires additional generators, switchgear and control systems. Oftentimes, the existing systems contain obsolete controls or controls that do not afford expansion capabilities.



Solution Spotlight

Critical Power Consultants: Solutions for Power Systems

Results

- Minimized downtime through robust, dual redundancy capabilities
- Increased productivity due to fast, powerful synchronization and the ability to maintain individual system components without interruption
- Lower total cost of ownership by leveraging existing hardware and software investments through flexible, scalable, open architectures
- Increased system integrity by eliminating multiple points of failure
- Time savings and reduced engineering costs with easy configuration and quick startup and maintenance

High availability for mission-critical redundancy

One of CPC's customers, a large government agency, sought to improve its system reliability in its data center by installing redundancy in the master control system. The agency had disparate standalone systems with multiple points of failure, which did not provide the level of reliability or security needed. It turned to CPC's industry and technical expertise to help implement a new solution with the latest technologies.

CPC installed a new redundancy solution for the agency using GE Intelligent Platforms' PACSystems' RX3i redundant controllers. The controllers offer connectivity to various I/O on a proven industrial network that provides deterministic data and automatic switchover for continuous operations.

The new redundancy solution operates as a single system to the overall operations, eliminating the complex preparations usually needed to synchronize data between other applications and external systems. It also features remote I/O to support redundant Ethernet LANs and a wide variety of network modules.

Having removed the multiple points of failure that were present before, the agency now has increased system integrity, reliability and security with the new solution. In addition, RX3i's open and flexible architecture enabled CPC to leverage the agency's existing technology equipment, saving significant time and money.



PACSystems Rx3i's open and flexible architecture enabled CPC to leverage the agency's existing technology equipment, saving significant time and money.



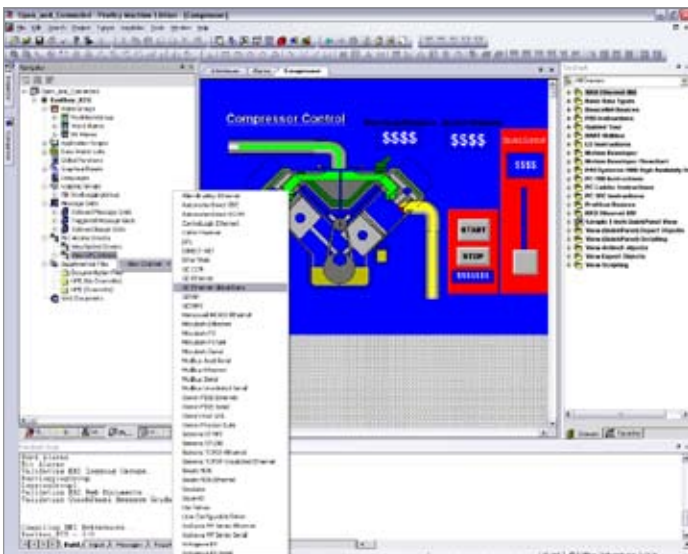
Powerful site monitoring that's easy to configure, monitor and maintain

Another CPC customer needed an efficient way to capture and monitor its critical information and to be notified if action was needed. Therefore, CPC provided a tightly integrated site monitoring system using GE Intelligent Platforms' Proficy* Machine Edition and Proficy Historian software solutions, which provided web-enabled remote monitoring and diagnostics of all critical components such as HVAC, UPS, PDUs, and others.

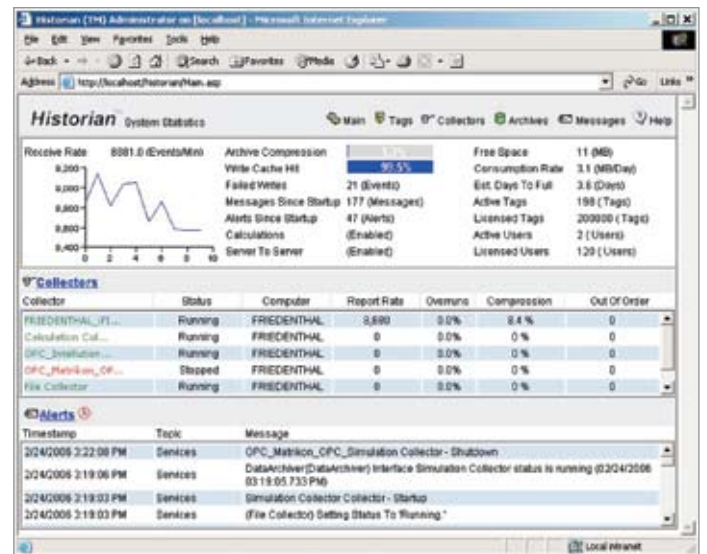
The heart of the solution was Proficy Historian, a robust and effective data repository that collects, archives and distributes large

volumes of real-time information at incredible speeds. Coupled with Proficy Machine Edition, CPC leveraged easy configuration and installation with the software's advanced object oriented programming and multiple target capabilities, which saved numerous hours for programming.

Due to the system's ease of use and simplicity, the agency can easily monitor and maintain operations and access critical information from anywhere at anytime—allowing for faster responsiveness from a mobilized workforce.



Proficy Machine Edition



Proficy Historian

Solution Spotlight

Critical Power Consultants: Solutions for Power Systems

Benefits

Using GE Intelligent Platforms' advanced hardware and software solutions, CPC has delivered powerful solutions on a common platform that can be leveraged again and again for other end-user customers. The solutions have already opened up new revenue streams with other implementation opportunities.

CPC selected GE's suite of products for its open and flexible platform and tight integration. The solutions are quick to deploy and do not require having to reprogram or reconfigure the solution, which can save CPC significant time and costs, resulting in higher productivity and profitability.

In addition to key benefits for CPC, the redundancy and monitoring solutions using GE's technologies have delivered significant benefits for end users:

- Quick time-to-solution with flexible programming
- Increased efficiency and reduced costs
- Robust and secure redundancy capabilities
- Increased system integrity and security
- Ability to track power data and respond quickly
- Enhanced flexibility, openness and scalability
- Connectivity with various communications devices

OEM Edge – A GE Intelligent Platforms Partner Program

As an OEM in today's challenging business environment, key global partnerships are a necessity to help you meet and exceed your customer's expectations. As these expectations continue to expand, you will need to have partners that can deliver with the same speed and efficiency your customers expect from you. With this in mind, GE Intelligent Platforms has developed a preeminent program for our OEM partners that includes membership benefits that give you a significant edge to help your customers and grow your business.

This program is all about you, the OEM, and what you need from an automation supplier to win. The OEM Edge membership benefits are a continuously growing compilation of services and tools that will deliver ongoing value to you year after year.

For more information: www.ge-ip.com/oem

Membership Benefits

- Development Software Kits
- Conversion Services
- Product Support
- Program Migration Tools
- Product Rebranding Capabilities
- Consulting
- Proof of Concept Hardware
- Training
- Do-It-Yourself Marketing Tools
- Third Party Device Integration
- Application Support
- Application Library

GE Intelligent Platforms Contact Information

Americas: **1 800 322 3616** or **1 434 978 5100**.

Global regional phone numbers are available on our web site.

www.ge-ip.com

