

# Alarm & Event Express

## Email Notification for GE Proficy HMI/SCADA Products

Make sure your personnel are aware of process conditions, at all times. This simple tool generates and sends email messages based on OPC Alarm and Event Server data. All current GE HMI/SCADA solutions offer support for OPC Alarm and Event messaging. With Alarm & Event Express, notification can come to your email system, cell phone or Blackberry™, right from your HMI/SCADA system.

### OPC Alarms and Events

OPC Alarm and Events (A&E) is the standard for real-time access to Alarm, Event and System messages in the automation industry. GE HMI/SCADA products all support OPC A&E, both as a Server, providing messages to other clients, and as a Client, viewing OPC A&E data from other sources. OPC Alarm & Event Express is an OPC Client that enables you to send emails based on OPC A&E messages.

### Overview of Operation

Alarm & Event Express lets you define email destinations separately from source subscriptions. Define all the possible recipients for email, complete with a weekly schedule of availability, then define subscriptions to Alarm and Event messages. As a message is detected, Alarm & Event Express will create an email message, following the user configured formatting, and sends it to one or more email recipients.

Email destinations include your corporate email servers, simply selected as an IP address or server name, and other email servers that require additional User and Password authentication.

WWTP5 - Alarm & Event Express

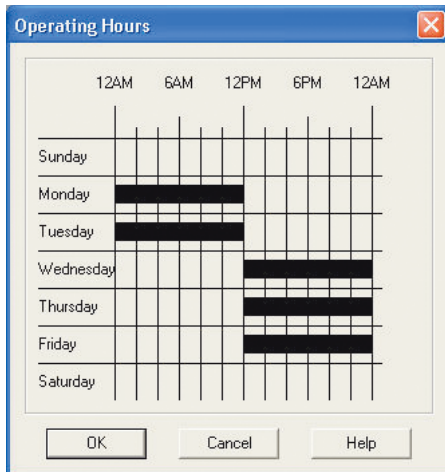
Time of Event	Cause	Severity	Sub...	New State	Attributes
15:16:12	Active state	850	HI	None	CV: 76.00;
15:16:15	None	850	HIHI	None	CV: 81.00;
15:16:27	None	850	None	Condition Enabled	CV: 1.00;
15:17:12	Active state	850	HI	None	CV: 76.00;
15:17:15	None	850	HIHI	None	CV: 81.00;
15:17:27	None	850	None	Condition Enabled	CV: 1.00;
15:18:12	Active state	850	HI	None	CV: 76.00;
15:18:15	None	850	HIHI	None	CV: 81.00;
15:18:27	None	850	None	Condition Enabled	CV: 1.00;
15:19:12	Active state	850	HI	None	CV: 76.00;
15:19:15	None	850	HIHI	None	CV: 81.00;
15:19:27	None	850	None	Condition Enabled	CV: 1.00;
15:20:12	Active state	850	HI	None	CV: 76.00;
15:20:15	None	850	HIHI	None	CV: 81.00;
15:20:27	None	850	None	Condition Enabled	CV: 1.00;
15:21:12	Active state	850	HI	None	CV: 76.00;
15:21:15	None	850	HIHI	None	CV: 81.00;

Alarm & Event Express Main Display

Alarm & Event Express can send emails to one or more destinations. Each email destination offers a weekly schedule with hour level time resolution. The schedule controls email address validity throughout the week.

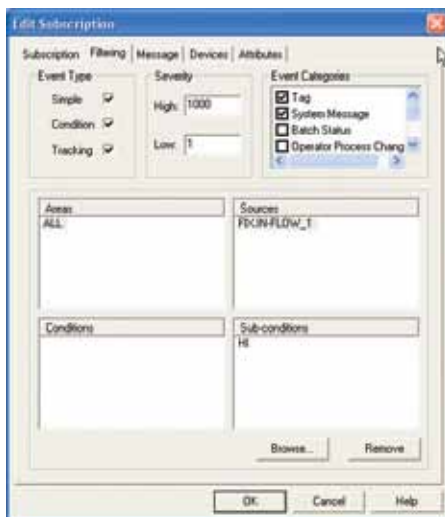


# Alarm & Event Express Email Notification for GE Proficy HMI/SCADA Products



## Email Scheduling

Finally, email messages can include a subject and attachments. Typical uses include highlighting the purpose of the email in the subject and attaching a report of additional information, or attaching a document that defines alarm or event management procedures.



## Subscribe to Data

Alarm & Event Express will monitor local and remote OPC A&E Server Messages as defined in a Subscription. Subscriptions can be customized based on filtering criteria. You can subscribe to all messages from an

OPC Server. Subscriptions can be tightened by filtering on the types of messages, for example – Tag, System, Batch, Operator and Diagnostic messages. And, you can filter to the specific message of a Tag – High Alarm vs. Rate of Change Alarm for example. Each subscription offers the ability to select email contents (the OPC Alarm and Event Message fields to include in the body of the report), and the Email destination (Devices) address.

## Extensive Diagnostics

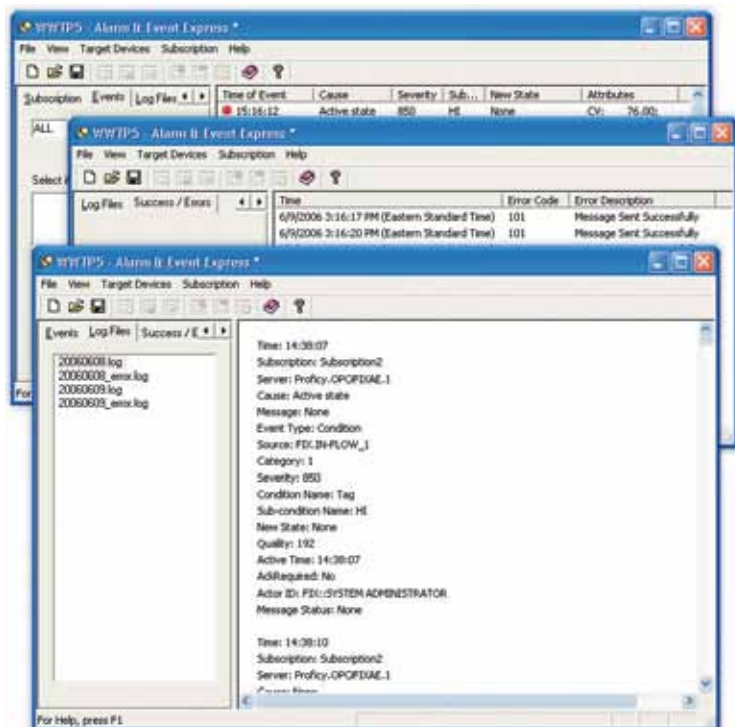
Alarm & Event Express offers a high degree of visibility into its operations. Daily logs document all Subscription activity and the status

of each transaction. From Operation Status logs to Daily Transaction logs and online Event Viewing, Alarm & Event Express ensures that you have all the information necessary to troubleshoot your operation.

## Where to Get Alarm & Event Express

Alarm & Event Express can be downloaded from the HMI/SCADA Productivity Packs folder in the Developer Downloads section of the GE GlobalCareWebsite at [www.ge-ip.com/support](http://www.ge-ip.com/support).

For more information on GE Products [www.ge-ip.com](http://www.ge-ip.com)



## About GE Intelligent Platforms

GE Intelligent Platforms, a General Electric Company (NYSE: GE), is an experienced high-performance technology company and a global provider of hardware, software, services, and expertise in automation and embedded computing. We offer a unique foundation of agile, advanced and ultra-reliable technology that provides customers a sustainable advantage in the industries they serve, including energy, water, consumer packaged goods, government and defense, and telecommunications. GE Intelligent Platforms is a worldwide company headquartered in Charlottesville, VA and is part of GE Home and Business Solutions. For more information, visit [www.ge-ip.com](http://www.ge-ip.com).

## GE Intelligent Platforms Contact Information

Americas: **1 800 433 2682** or **1 434 978 5100**

Global regional phone numbers are listed by location on our web site at [www.ge-ip.com/contact](http://www.ge-ip.com/contact)

[www.ge-ip.com](http://www.ge-ip.com)

